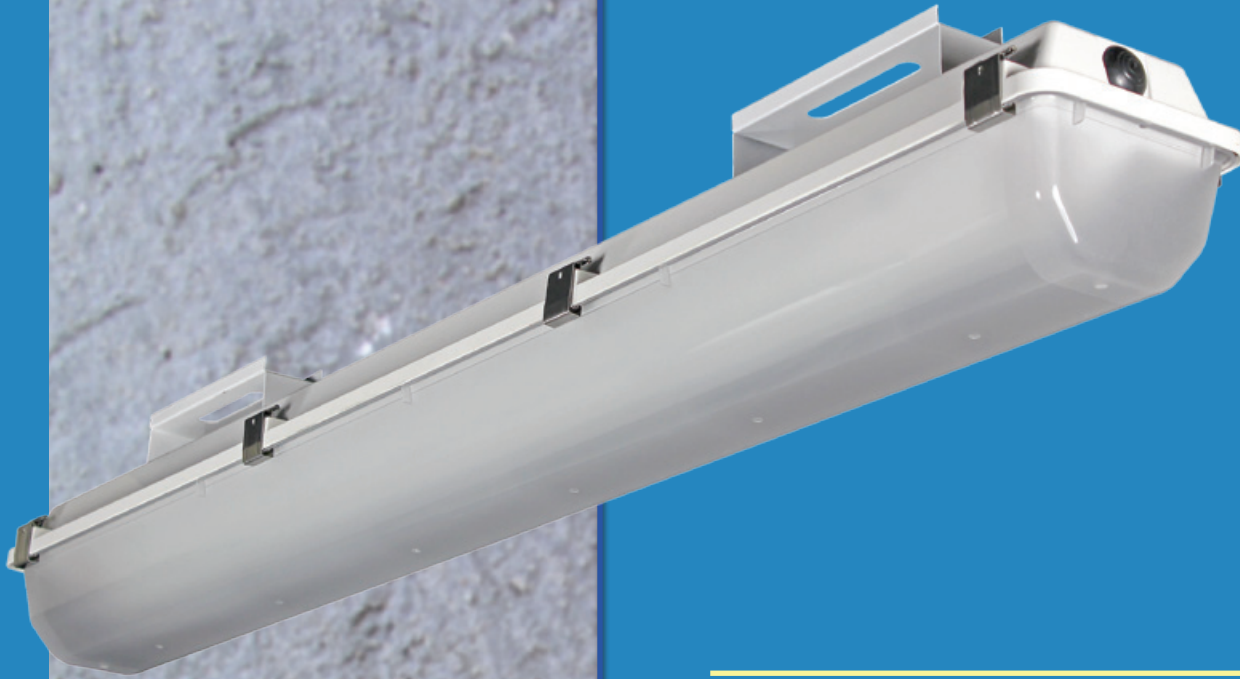


XLPG Linear LED Parking Garage Fixture



Marketing Positioning Statement

The XLPG Linear LED Parking Garage fixture delivers high performance, precision optics at an affordable value; making it the LED solution of choice for new construction and retrofit parking garages. With a life expectancy of up to 100,000 hours, the XLPG is purpose built for parking garage applications. Easy and quick to install in standard surface mounting applications, optional heavy-duty mounting brackets are available for extra stability. Utilizes 62% less energy when compared to traditional 150-175 watt metal halide.

Leading Specification Features

- ▣ Low Total Cost of Ownership – Quick Payback
 - ▣ Optional Controls for Maximum Energy Savings
 - ▣ Outstanding Uniformity & Visual Comfort
 - ▣ Unparalleled Speed & Ease of Installation
 - ▣ Exceptional Reliability in a Parking Garage Fixture
-



Low Total Cost of Ownership – Quick Payback

Annual Energy & Maintenance Savings

\$37,636 savings for (250) XLPG fixtures replacing (250) 150W MH fixtures
\$42,673 savings for (250) XLPG fixtures replacing (250) 175W MH fixtures

Payback Analysis

ROI of 1.7 years for 150W MH replacement example
ROI of 1.9 years for 175W MH replacement example

Based upon 24/7 daily operation at \$.10kwh

Optional Controls for Maximum Energy Savings

Choices of dimming, daylight harvesting, occupancy, bi-level switching
Venabled for wireless control systems

Outstanding Uniformity & Visual Comfort



Industry-Leading Performance

Unique high angle optics provide highest lumen output in the industry
High lumen output of up to 9874 lumens
Up to 14% uplight which eliminates “cave effect”
High performance distribution provides excellent uniformity and meets IES-RP20, IES G-1, and DLC

Lumen Output

Range of lumen outputs available by varying the lens options and LED color temperature
Available lumen range of 7,980 to 9,874

Highest Efficacy in Industry

Up to 125 lumens per watt

Two Lens Options

Diffused or optional clear lens
Utilize clear lens options to provide greater overall lumen output
Utilize diffuse lens option with impact resistant acrylic to reduce overall glare and visibility of diodes

LIGHT OUTPUT - XLPG				
HO		Lumens	Watts	LPW
Diffused Lens	Cool White	9,634	79	123
	Neutral White	8,273	79	105
	Warm White	7,980	79	101
Clear Lens	Cool White	9,874	79	125
	Neutral White	8,478	79	107
	Warm White	8,188	79	104
SS				
Diffused Lens	Cool White	6,764	57	118
	Neutral White	6,048	57	107
	Warm White	5,731	57	101

LED Chips are frequently updated therefore values may increase.

Color Rendering Index

CRI of 70 facilitates recognition of specific colors of various objects to meet industry standards

Color Temperature

Cool white - 5000°K provides bright and pleasing area lighting at reduced foot candle levels
Neutral white – 4000°K for a warmer color temperature
Warm white - 3500°K for warmest color temperature

Temperature Range

-30°C to 35°C (-22°F to 95°F)
Suitable for a wide range of ambient temperatures

Drive Current

HO (High output)

Input Voltage

Universal voltage 120V thru 277V (50/60hz input) and 347V

Unparalleled Speed & Ease of Installation

Mounting Designed for standard surface mounting with no need to open fixture
Optional heavy duty mounting bracket – ideal for vandal prone areas
Pendant mount option also available

Maintenance-Free Once installed, the XLPG is virtually maintenance free

Exceptional Reliability in an LED Parking Garage

Housing High impact, reinforced polyester fiberglass housing
Purpose built for Parking Garage applications
Gear tray components are mounted to a code-gauge, die-formed steel tray

Weather-tight IP67 Vaportight Design

Gasketing Fire retardant, non-toxic gasket for continuous seal between housing and lens

Finish All metal parts painted after fabrication following treatment with phosphate rust inhibitor
Interior housing reflective surfaces are finished with white, high reflectance (minimum 92%) polyester powder

Long-Life Minimum up to 100,000 hours depending upon ambient temperature of installation location
Up to 5X the lamp life expectancy of traditional HID

Protection IP65 on sealed optical assembly provides total dust ingress protection, temporary liquid submersion protection
Driver components encased in potting material for IP65 moisture resistance
NSF certified for non-food zone applications

Warranty Limited 5-year warranty

Surge Protector Meets IEEE C62.41.2-2002, Location Category C
Prevents damage to fixture due to unexpected “surge” or “swell” in AC Line Voltage. 10K protection.

DLC Selected versions of this product are on the DLC Qualified Products List (QPL).
Consult the LSI website or the DLC QPL website at www.designlights.org for specific products listed.



(513)793-3200
www.lsi-industries.com

©2015 LSI INDUSTRIES INC.

03/15 3986