

# INSTALLATION AND ASSEMBLY INSTRUCTIONS

## Crossover® XPG QM & XPG HCP Series

Patented and US & Int'l. Patents Pending

**WARNING: Failure to follow instructions could result in damage to product and void warranties**

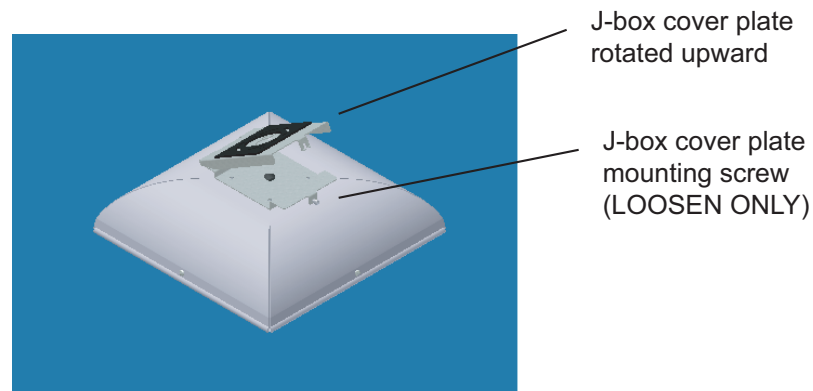
**WARNING: Risk of fire or electrical shock. Disconnect power before installing or servicing.**

**WARNING: Wiring to be performed by qualified electrician only, per National Electrical Code and local code!**

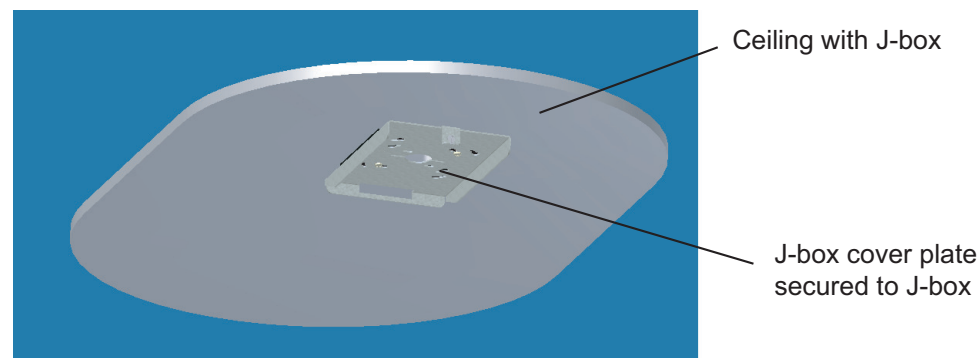
1. Reference layout drawing for luminaire placement.
2. Model XPG QM is intended for direct mount to J-box or ceiling only. Model XPG HCP is intended for mounting to HCP (Hook, Cord, and Plug) option at J-box (not provided).

### XPG QM MODEL ONLY (SEE PAGES 3 & 4 FOR MODEL XPG HCP)

3. Lie luminaire lens down on the ground, protecting the finish beneath.
4. Loosen J-box cover mounting screw (do not remove). Slide and rotate J-box cover plate upward, off luminaire mounting hinge.



5. Remove J-box cover plate. Pull supply wiring downward (Hot, neutral, and ground wires).  
**WARNING: Risk of electrical shock. High temperatures inside fixture. Make certain supply wiring is not "hot" before wiring. Luminaire is universal voltage 120-277VAC, 50/60Hz. Use supply wire rated 90C minimum!**
6. With luminaire's J-box plate in hand, feed supply wiring thru large center hole of J-box cover plate. Secure to J-box using minimum (4) screws. Use included J-box gasket for wet locations. Note orientation and direction of plate below.

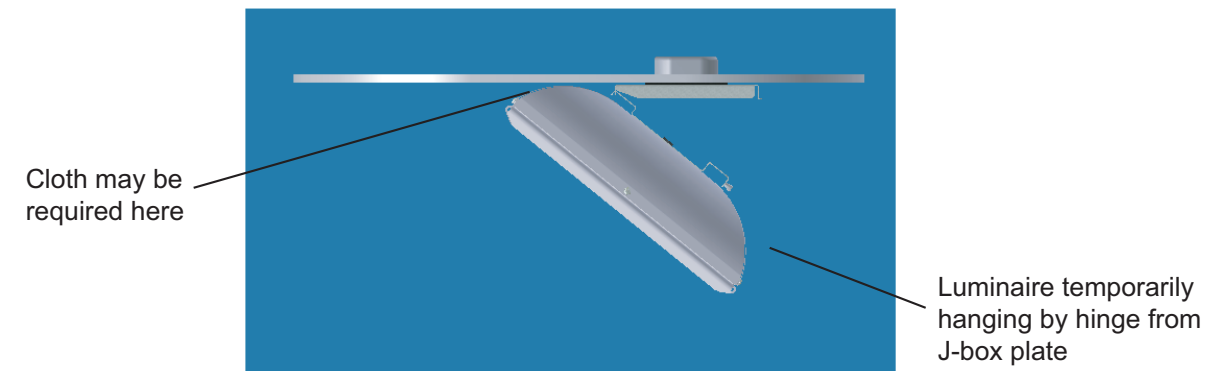


Listed to UL1598  
Suitable for wet locations  
(QM model only)

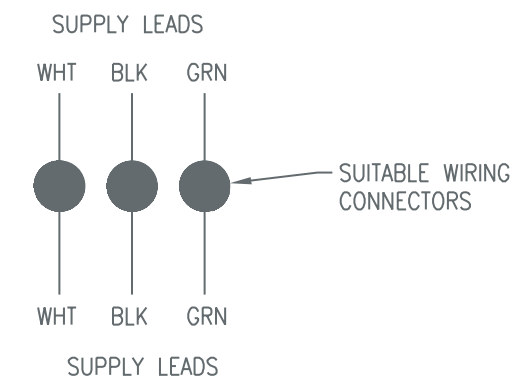
## Crossover® XPG QM & XPG HCP Series, cont'd.

### XPG QM MODELS ONLY (SEE PAGES 3 & 4 FOR MODEL XPG HCP INSTRUCTIONS)

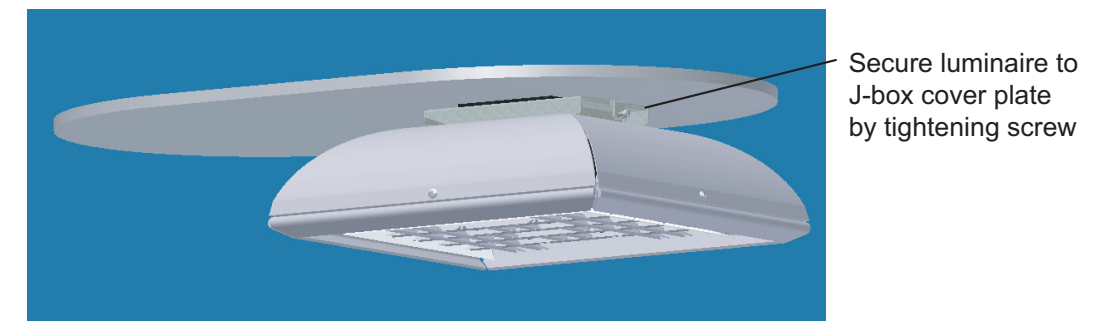
7. Lifting luminaire up to mounted J-box plate, slide luminaire over hinge slot so luminaire temporarily hangs from bracket. NOTE: If housing touches ceiling while hanging, a soft cloth may be placed on backside of luminaire housing, between housing and ceiling.



8. Wire luminaire to supply wires per National Electrical Code and local code, using suitable wiring connectors.



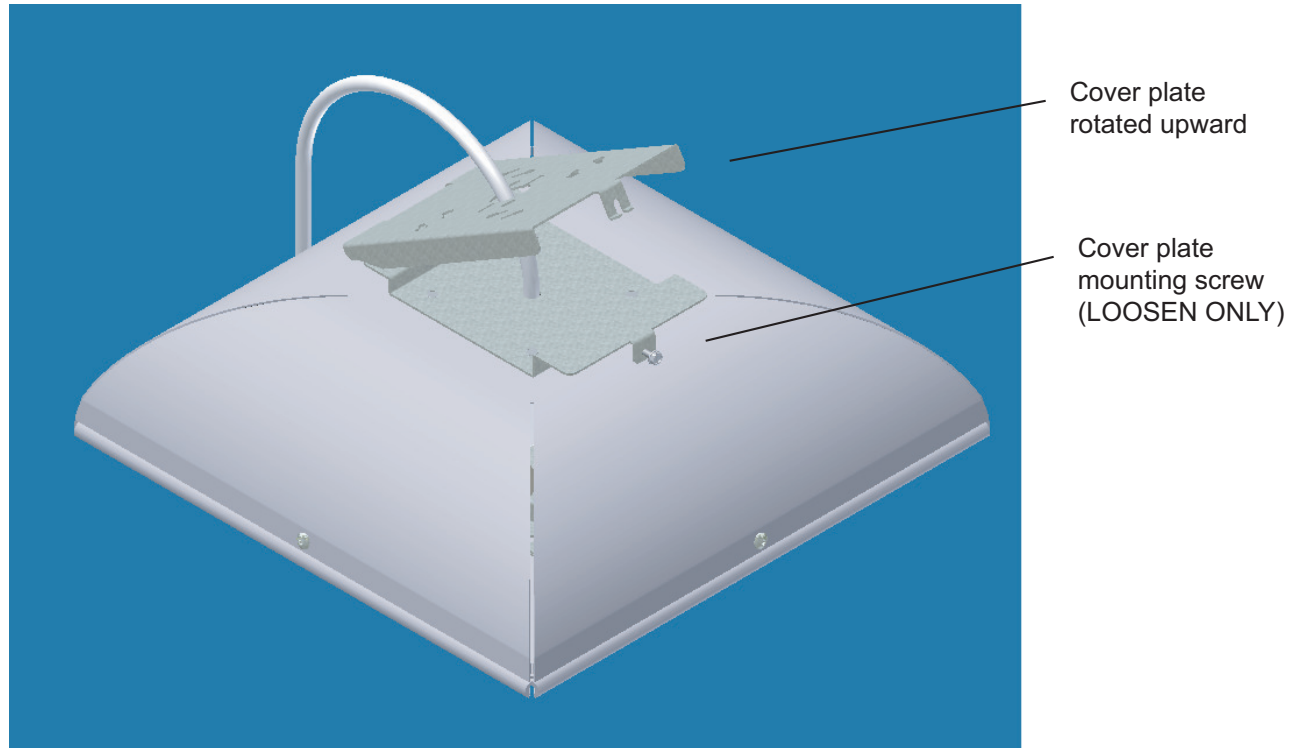
9. Make sure wiring connections are moved to inside of J-box.
10. Making sure no wires are in the way or pinched, swing luminaire up evenly with J-box cover plate. Secure luminaire to plate by tightening screw on luminaire. See Figure 4.



## Crossover® XPG QM & XPG HCP Series, cont'd.

### XPG HCP MODEL ONLY (SEE PAGES 1 & 2 FOR MODEL XPG QM)

3. Luminaire is shipped with Cord/Plug pre-wired and Hook/screw shipped loose in same box as Luminaire.
4. Lie luminaire lens down on the ground, protecting the finish beneath.
5. Loosen cover plate mounting screw (do not remove). Slide and rotate J-box cover plate upward, off luminaire mounting hinge.



6. Locate Hook and screw.

**Installation Questions?**  
 Call LSI Field Service Department at:  
 1-800-436-7800 Ext. 3300  
 Fax: 1-877-861-1368



A Company with a Smart Vision

LSI Industries Inc. 10000 Alliance Road Cincinnati, Ohio 45242 (513) 793-3200 Fax (513) 793-0147 www.lsi-industries.com

390927 Rev. 7/09

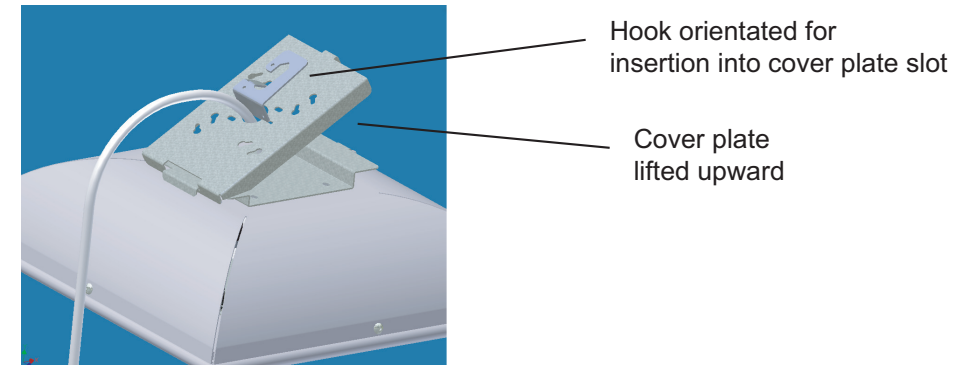
P 3 of 4

©2009 LSI Industries Inc.

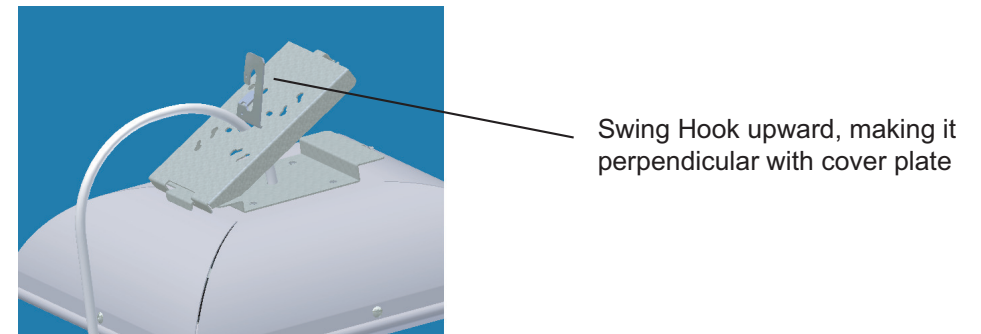
## Crossover® XPG QM & XPG HCP Series, cont'd.

### XPG HCP MODELS ONLY, cont'd. (SEE PAGES 1 & 2 FOR MODEL XPG QM INSTRUCTIONS)

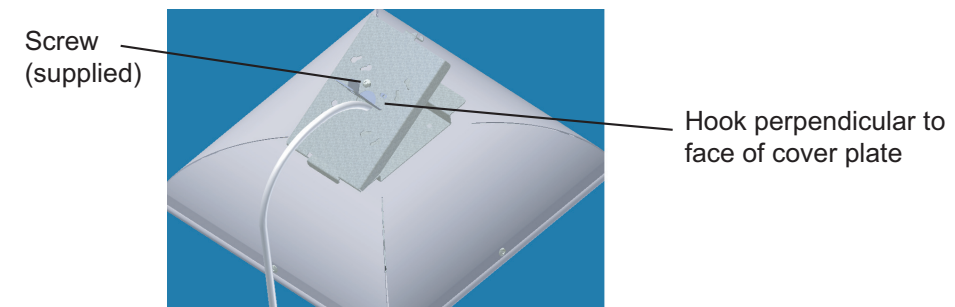
7. With cover plate rotated upward, and Hook in hand, install Hook to cover plate:
  - a. Angle Hook as shown, then insert blunt end into cover plate slot.



- b. Rotate Hook upward, so Hook is perpendicular with face of cover plate.



- c. Align hole of Hook with hole in top plate. Secure Hook to cover plate with screw (supplied).



8. Rotate cover plate downward to top of luminaire, over screw. Tighten screw.
9. Luminaire can now hang from suitable surface. **NOTE: Make sure surface can withstand weight of luminaire!**
10. Plug luminaire in to appropriate outlet. **NOTE: Make sure outlet is wired to luminaire voltage and receptacle type!**



A Company with a Smart Vision

LSI Industries Inc. 10000 Alliance Road Cincinnati, Ohio 45242 (513) 793-3200 Fax (513) 793-0147 www.lsi-industries.com

Page 4 of 4

p/n 390927 Rev. 7/09