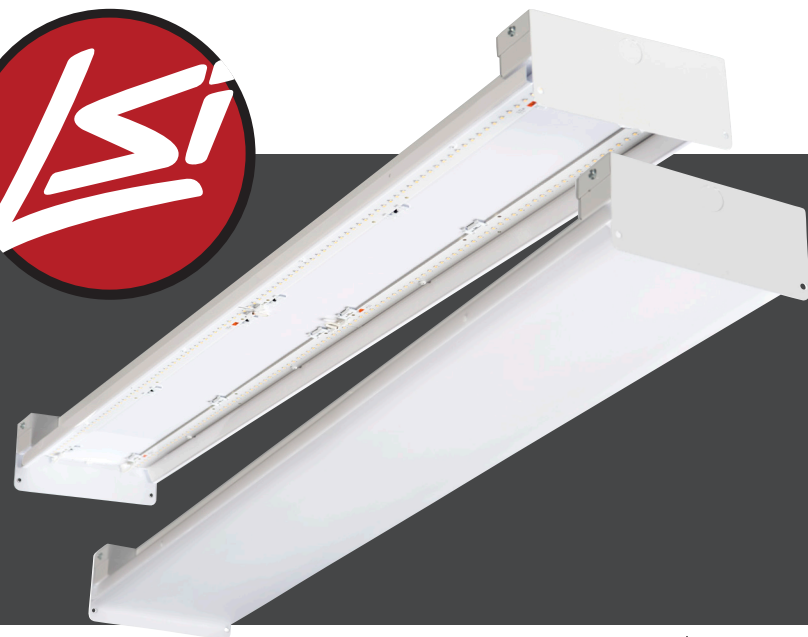


Catalog # :

Project :

Prepared By :

Date :



IHB4 LED 4FT Slim Industrial LED

With quick paybacks and efficiencies of up to 155 lumens per watt, the Industrial High Bay series is the best value high bay when upgrading from metal halide or fluorescent fixtures. Available in 5 lumen packages that produce a brighter and whiter light output and a smoother light pattern.

Features & Specifications

Optical System

- The optional high transmission lens, with 91% efficiency, is high impact, scratch resistant and protects the LEDs.
- Delivers improved visual comfort by eliminating any glare and providing a wider smoother and more uniform light output.
- LSI LEDs provide higher lumen output and greater energy efficiency
- Minimum CRI of 82.0

Electrical

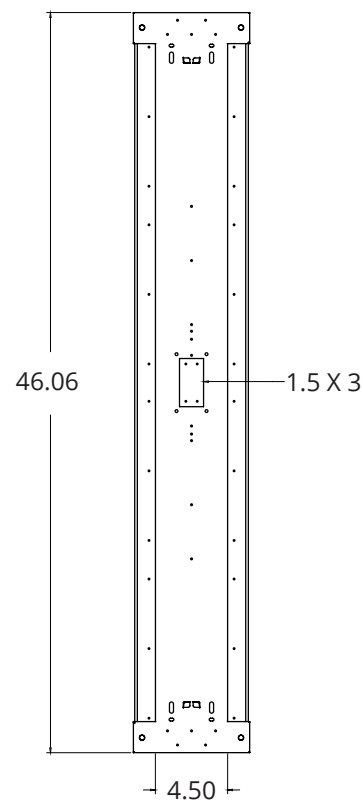
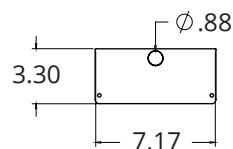
- Standard Universal Voltage (120-277 Vac) Input 50/60 Hz or optional High Voltage (347-480 Vac).
- L70 Calculated Life: 200,000+ Hours
- Driver is constant current, Class 2, 120-277 Vac, 50-60 Hz
- High Efficiency Driver: minimum 85%
- Driver Off-State Power is 0 Watts
- 0-10V dimming (1% - 100%) standard.
- Optional 120v-277v integral emergency battery pack is available to meet critical life safety lighting requirements. The 90-minute batteries provide constant power to the LED system, ensuring code compliance. A test switch/indicator button is installed on the housing for ease of maintenance.
- Emergency Backup Driver has 5W Input, 12W output.

Construction

- Rigid housing is die-formed thick gauge steel and aluminum.
- All metal parts are painted after fabrication following treatment with phosphate rust inhibitor. Finish coating of housing reflecting surfaces is with high-reflectance white (minimum 92%) polyester powder.
- The lightweight heat sinks are designed to perform in ambient temperatures up to 55°C.
- The Quick Wire access panel allows for easy power connection.
- The IHB4 makes it possible to meet ESFR fire suppression system requirements due to the fixtures 7.17" width.
- LEDs manufactured for the IHB4 series utilize Epoxy Guard conformal coating which reduces the chance of board corrosion.
- Luminaire is proudly assembled in the U.S.
- Weight: 10.0 lbs



Dimensions





IHB4 LED 4FT Slim Industrial LED

Features & Specifications (Cont.)

Control

- Optional integral passive infrared motion sensors and daylight sensors activate switching of luminaire light levels (see page 3 for more details).

Installation

- Suitable for suspension by chain, cable, or single (pendant) mono-point. To maintain ambient listing, mount minimum 6" from ceiling.

Warranty

- LSI LED Fixtures carry a 5-year warranty.
- 1 Year warranty on optional Battery Back Up. Test regularly in accordance with local codes

Listings

- LSI LED luminaires have been tested by an independent laboratory in accordance with IESNA LM-79 & LM-80.
- Listed to UL 1598 and UL 8750.
- RoHS Compliant.
- State of California Title 24.
- American Recovery and Reinvestment Act Funding Compliant.
- Suitable For Damp Locations.
- DesignLights Consortium Premium qualified luminaire, eligible for rebates from DLC member utilities.

DLC Listings

IHB4		
	4000K	5000K
Lumens	DLC Prod. ID	DLC Prod. ID
9L	PZN6VI8E	PHY7SX30
12L	PK5LTNJC	POW88VW7
15L	PBTYN5CP	PUMC319P
18L	P4VEXD2N	PD1V4MQI

Performance

IHB4						
	4000K			5000K		
Lumens	Delivered Lumens	Efficacy	Wattage	Delivered Lumens	Efficacy	Wattage
9L	9452	155.15	60.92	9831	160.69	61.18
12L	11530	153.85	74.94	11530	153.85	74.94
15L	14980	148.92	100.59	14980	148.92	100.59
18L	21410	136.20	157.20	21410	136.20	157.20

IHB4 W/ DA LENS						
	4000K			5000K		
Lumens	Delivered Lumens	Efficacy	Wattage	Delivered Lumens	Efficacy	Wattage
9L	8907	146.47	60.81	8907	146.47	60.81
12L	10870	145.38	74.77	10870	145.38	74.77
15L	14120	140.72	100.34	14120	140.72	100.34
18L	19990	127.50	156.79	19990	127.50	156.79

IHB4 W/ DA LENS		
	4000K	5000K
Lumens	DLC Prod. ID	DLC Prod. ID
9L	PDDMP5V4	PFX4A0K
12L	PXYRPB8A	PEHCJ0WG
15L	PW080WYP	P9QFCR8G
18L	PVZC76D7	PC30SHGA

DesignLights Consortium Premium qualified luminaires, eligible for rebates from DLC member utilities.

Luminaire Ordering Guide

TYPICAL ORDER EXAMPLE: **IHB4 LED 18L LL UNV DIM 40**

Family Prefix	Light Source	Lumen Package	Diffuser / Distribution	Voltage	Driver	Color Temp	Options / Controls
IHB4 = 4' Industrial High Bay	LED	9L - 9000 12L - 12000 15L - 15000 18L - 18000	LL = Less Lens DA = Diffused	UNV = Universal (120V-277V) HV = 347-480V Universal Voltage	DIM = Dim to 10% (0 to 10V)	40 = 4000K 50 = 5000K	'xC - x' Cord (No Plug) 'xT - x' 120V Cord & Plug 'xE - x' 208V Cord & Plug 'xF - x' 240V Cord & Plug 'xS - x' 277V Cord & Plug CWBB = Cold Weather Emergency Battery Back Up OC - Occupancy Sensor IMS - Integrated Motion Sensor WG - Wireguard

1 - x = 3', 6' and 10' lengths



Integrated Control Specifications



Features

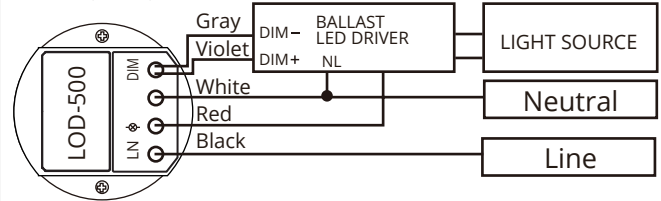
- Omni-directional quad element infrared sensor
- 100~277VAC universal line voltage powered
- Frequency detection zero-cross relay switching
- 0-10V selectable output for low dim control
- Walk test and sensor operation LED indicator
- Direct lead wires for easy wiring connections
- 8 rotary DIP switch selectable control modes

Specifications

Power Supply	120/277VAC, 50/60Hz
Maximum Load	800W
Infrared Sensor	Omni-Directional Quad Element Pyroelectric
Detectable Speed	0.5~10 ft./second (0.15~3m/second)
Mounting Height	Subject to the lens type applied
Detection Range	Subject to the lens applied and height
Zero Crossing	Automatic frequency detection
Low Dim Control	0-10V
Dim Output Current	Max. 2mA @ 120VAC Max. 5mA @ 277VAC
Low Dim Level	0/5/10/20/25/33/50% selectable
Ambient Light Level	L: 20~50 lux, M: 80~130 lux, H: 500~600 lux
Delay Time Setting	1'3'/5'/10'/15'/20'/30' selectable
Time-Off Delay	10 min., TO modes only
Op. Humidity	Max. 95% RH
Op. Temperature	-40°F~131°F (-40°C~55°C)
Dimensions	Ø2.36" x 1.45"H (Ø60 x 37mm)

*10 lux equals to approximately 1 ft. candle

Wiring Diagram





Occupancy Sensor Specifications



Electrical

- Input Voltage: 120/227/347VAC
- Operational Frequencies: 50/60Hz
- Wire Designation: Line - Black, Load - Red, Neutral - White
- Load Rating:
800VA@120VAC
1200VA@277VAC
1500VA@347VAC
- Mounted: 1/4 HP Motor Load @ 120V

Environmental

- Operating Temperature Range: 14°F to 160°F

Construction

- High Impact Housing
- Injection Molded Plastic
- Color Coded Wire Leads are 42" Long

Specifications

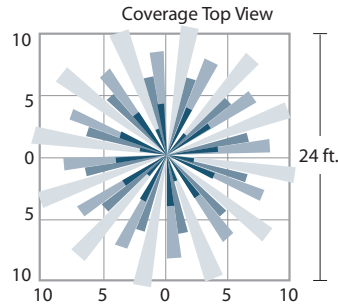
- Size: 3.5"W x 3.5"H x 1.25"D (8.89cm x 8.89cm x 3.175cm)
- Color: White
- UL and cUL certified, Photoelectric Switch, CEC Title 24 Compliant

Controls

Timer Setting: 30 seconds - 20 minutes

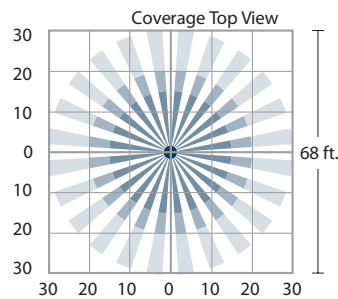
Range & Coverage

The 360° PIR lens provides a 2:1 spacing to mounting height coverage under 25 ft. mounting and a 1.5:1 for heights up to 40 ft. mounting. The aisle lens is designed to provide detection of 60 ft. long by 20 ft. wide for heights up to 40 ft. mounting.



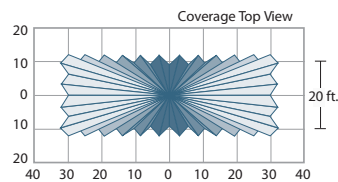
MS360 High Bay Lens

Typical Mounting Height: 20-40'
Optimal Coverage
24' diameter at 20' height;
increased coverage density
Application
high bay, open area



MS360 Low Bay Lens

Typical Mounting Height: 8-20'
Optimal Coverage
40' diameter at 20' height;
increased coverage density
Application
low bay, open area



MS360 Aisle Lens

Typical Mounting Height: 20-40'
Optimal Coverage
60' linear x 20' width
Application
high bay, aisle ways

