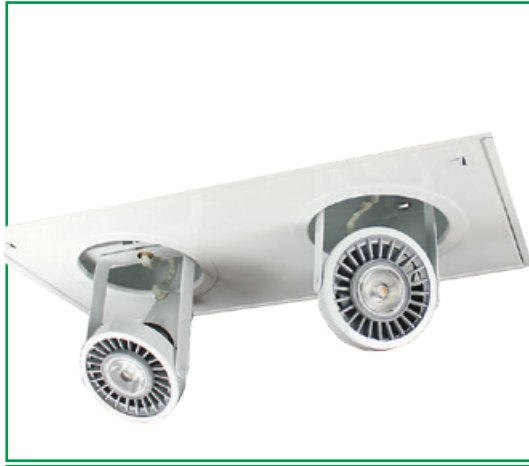


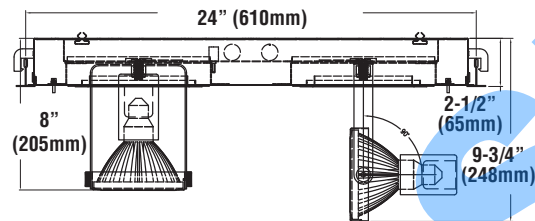
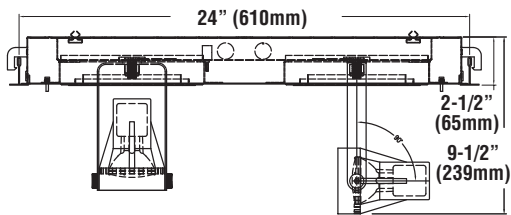
# LED DUETTO® (DUT 201)



## DOE LIGHTING FACTS

Department of Energy has verified representative product test data and results in accordance with its Lighting Facts Program. Visit [www.lightingfacts.com](http://www.lightingfacts.com) for specific catalog strings.

## DIMENSIONS



## PRODUCT HIGHLIGHTS

- Powerful accent lighting product provides the flexibility of track lighting and the power of a pair of adjustable LED lighting fixtures
- Adjustability of the lampholders plus the availability of a wide range of distributions provide the ability to create just the right accent lighting

**LAMPS** - Dimmable LED reflector lamps with high brightness LEDs. Two sizes: PAR30 and PAR38. Available in a wide range of outputs and distributions (spot or flood). Contact factory for details.

**HOUSING COMPONENTS** - Pre-painted die-formed 22 gauge CRS

**DOOR** - Die-formed cold rolled steel, polyester powder coated finish

**ADJUSTABLE LAMP HOLDERS** - Gimbal ring constructed of 16 gauge CRS, white polyester powder coated finish. Rotation 0° - 358°, vertical 0° - 90°. Two locking knobs included.

**YOKE** - Cold rolled steel, polyester powder coated finish

**SOCKET** - Medium base, pulse rated for 4kv

**MOUNTING** - Supplied with T-bar clips

**FINISH** - All metal parts painted after fabrication following treatment with phosphate rust inhibitor. Finish coating of housing reflecting surfaces is with high-reflectance (minimum 92%) polyester powder.

**WARRANTY** - Limited 5-year warranty

**PHOTOMETRICS** - Consult factory.

**LISTING** - UL listed to U.S. and Canadian safety standards. Suitable for damp location

This product, or selected versions of this product, meet the standards listed below. Please consult factory for your specific requirements.



## ORDERING INFORMATION

TYPICAL ORDER EXAMPLE: **DUT 201 G 38LED 120 Lamps**

Prefix	Mounting	Light Source (Less Lamp)	Line Voltage	Options
DUT 201	G - Grid	30LED - PAR 30 38LED - PAR 38	120 - 120 VAC	LL - Less Lamp (standard) Lamps - Contact factory for available wattages, color temperatures, and distribution patterns

## ACCESSORY ORDERING INFORMATION (Accessories are field installed)

Description	Order Number
Flange Kit - 1 x 2	FK12



Project Name \_\_\_\_\_ Fixture Type \_\_\_\_\_  
Catalog # \_\_\_\_\_

10/09/15  
© 2015  
LSI INDUSTRIES INC.