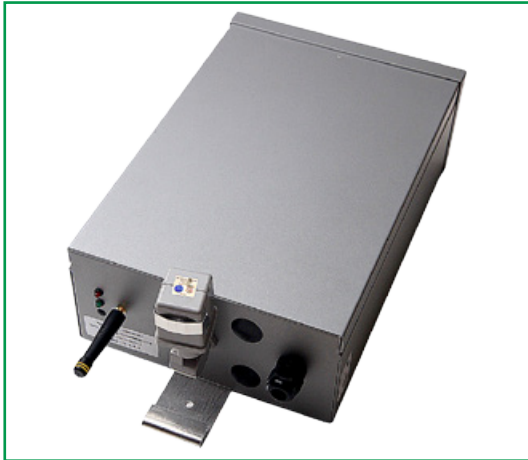


# PLATINUM PHOTO SENSOR (PPH)



## PRODUCT DESCRIPTION

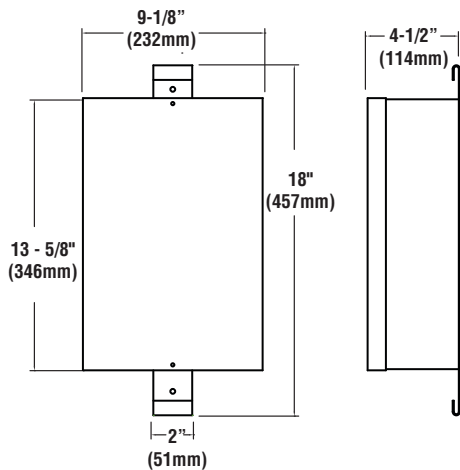
LSI Controls' Platinum Photo Sensor (PPH) is one of the components of a Platinum Outdoor Wireless Lighting Control System. It provides the capability to integrate an outdoor photo sensor into a Platinum Wireless Lighting Control System. The PPH includes a control module with battery-backed real time clock, radio, an outdoor rated enclosure and motion sensor with a 270° wide viewing angle and 50 foot range. The PPH is also available with an optional stainless steel exterior enclosure. The PPH has a real time clock as a back up to the Platinum Site Manager.

The Platinum Wireless Lighting Control System is comprised of one Platinum Site Manager (PSM), one Platinum Override Switch (POV), Platinum Control Modules (PCM) for each lighting fixture, optional Platinum Motion Sensor Overrides (PMO), optional Platinum Photo Sensors (PPH), optional Platinum Zone Controller (PZC) and optional Platinum Circuit Controllers (PCC).

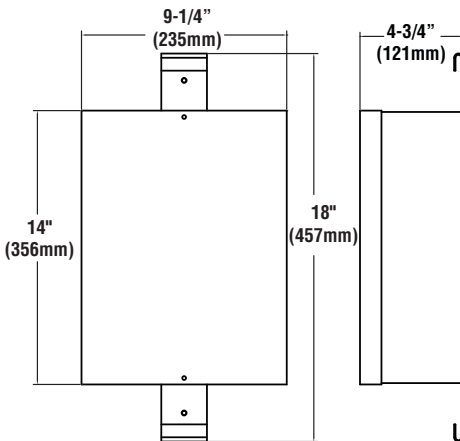
The Platinum Outdoor Wireless Lighting Control System communicates using a 915 MHz mesh radio network employing the standard 802.15.4 protocol. Each unit functions as a repeater extending the wireless mess network. Typical range between wireless devices: 300 feet (approx. 100m) outdoors with line-of-sight.

## DIMENSIONS

### EXTERIOR



### SS EXTERIOR



**HOUSING** – Die-formed steel housing contains factory prewired controller and motion sensor. A terminal block is provided for easy field wiring. Rated for wet locations.

**FINISH** - Enclosures have a powder coat finish with “Anthro Silver” color. Stainless Steel enclosures are made with 304 Grade with a natural finish.

**MOUNTING** - Mounting bracket is factory installed and can be used with cable straps or mounting holes.

**ELECTRICAL** - Step-down transformer installed for field wiring 120V, 208V, 240V, 277 V, and 480VAC. 50/60 Hz operation.

**OPERATING TEMPERATURE** - -40°C to +70°C (-40°F to +160°F).

10-95% non-condensing, 7000' altitude or less.

**WARRANTY** - LSI Controls components carry a limited 5-year warranty

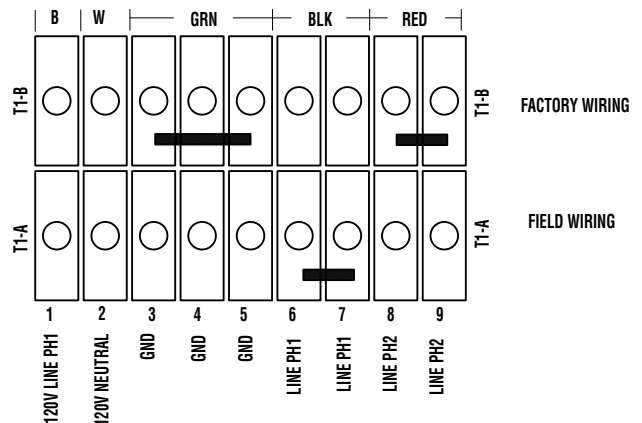
**SHIPPING WEIGHT (IN CARTON)** – PPH EXT- 11 lbs. / 5 kg (standard steel housing), PPH SS - 13 lbs. / 5.9 kg (stainless steel housing)

**CERTIFICATIONS** – Listed to US and Canadian safety standards. RoHS Compliant.

This product, or selected versions of this product, meet the standards listed below. Please consult factory for your specific requirements.



## TERMINAL BLOCK WIRING DIAGRAM



## ORDERING INFORMATION

TYPICAL ORDER EXAMPLE: **PPH EXT**

CAT NO.	OPTIONS
PPH - Platinum Photo Sensor	EXT - Exterior (default) SS - Stainless Steel



Project Name \_\_\_\_\_ Catalog # \_\_\_\_\_

Visit our website at: [www.lsi-industries.com](http://www.lsi-industries.com)

08/05/15

© 2015  
LSI INDUSTRIES INC.