

GOLD CIRCUIT CONTROLLER (GCC)

PRODUCT DESCRIPTION

LSI Controls' Gold Circuit Controller (GCC) is one of the components of a Gold Wireless Lighting Control System. Each Gold Circuit Controller provides the capability to control 3 phase loads @ 15 or 30 Amps per leg.

The Gold Wireless Lighting Control System is comprised of one Gold Site Manager (GSM), one Gold Override Switch (GOV), Gold Control Modules (GCM) for each lighting fixture, optional Gold Motion Sensor Overrides (GMO), optional Gold Photo Sensors (GPH), optional Gold Zone Controller (GZC) and optional Gold Circuit Controllers (GCC).

The Gold Wireless Lighting Control System communicates using a 915 MHz mesh radio network employing the standard 802.15.4 protocol. Each unit functions as a repeater extending the wireless mess network. Typical range between wireless devices: 300 feet (approx. 100m) outdoors with line-of-sight.

HOUSING – Die-formed steel housing contains factory prewired controller and contactors. A terminal block is provided for easy field wiring.

FINISH - Housing has a powder coat finish with “Anthro Silver” color.

MOUNTING - Mounting bracket is factory installed and can be used with cable straps or mounting holes.

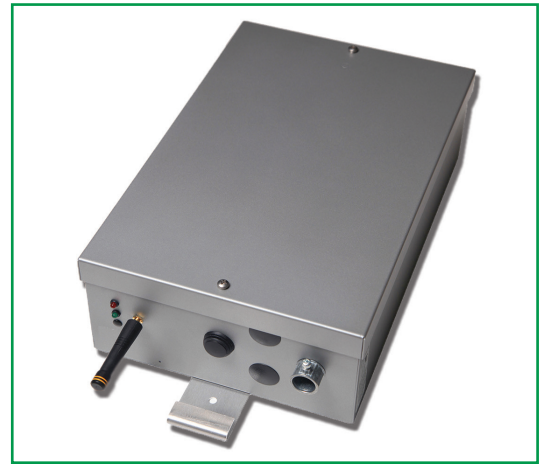
ELECTRICAL – Power contactors rated at 600v @ 15A or 30A. 208-480V, 50/60 Hz

OPERATING TEMPERATURE - INT -20°C to +70°C (-4°F to +160°F) for indoor use only. 10-95% non-condensing, 7000' altitude or less.

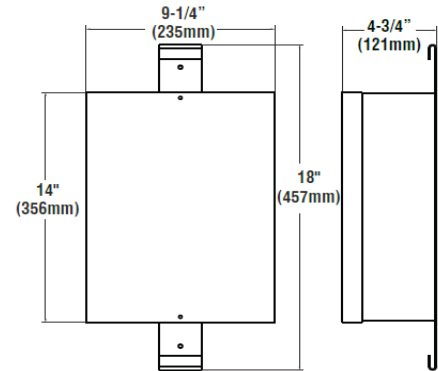
WARRANTY - LSI Controls components carry a limited 5-year warranty

SHIPPING WEIGHT (IN CARTON) - 14 lbs. / 6.3 kg

CERTIFICATIONS – Listed to US and Canadian safety standards. RoHS Compliant.



DIMENSIONS



This product, or selected versions of this product, meet the standards listed below. Please consult factory for your specific requirements.

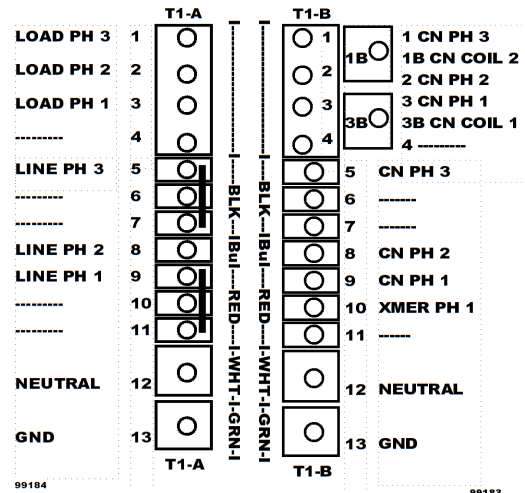


ORDERING INFORMATION

TYPICAL ORDER EXAMPLE: **GCC 15**

CAT NO.	LOAD
GCC - Gold Circuit Controller	15 - 15 Amp Load (default)
	30 - 30 Amp Load

WIRING DIAGRAM



Project Name _____ Catalog # _____

1-844-444-4476 Visit our website at: www.lsi-industries.com

11/20/15
© 2015
LSI INDUSTRIES INC.