

INSTALLATION AND ASSEMBLY INSTRUCTIONS

WF WIDE FACIA SERIES FIXTURE - BUILDING MOUNT

WARNING: Wiring to be performed by qualified electrician only.

WARNING: Disconnect power before servicing.

WARNING: Risk of fire or electrical shock. Verify the existing input voltage and match to product label before wiring.



BUILDING MOUNT (CHANNEL SUPPLIED BY OTHERS)

Note: The mounting hardware for these fixtures has been engineered. However, the crucial engineering points are the attachment of the mounting hardware to the building. Care should be taken to choose a fastener type for your structure. LSI is not responsible for any such fastener engineering. If any engineering is questionable, it is advisable that a local engineer review and certify the fastening techniques in question.

1. Remove fixture and hardware from carton. Inspect for damage.
2. If not equipped with QC (quick connect) feature, remove lamp and reflector(s), set aside.
3. Wire individual fixtures according to local code and National Electrical Code (NEC). Lampholders are prewired to ballast. Follow wiring diagram on ballast label. **Note: If supply wires are within 3 inches of ballast, use wire rated 90 degrees C.**
4. Before energizing, make sure input voltage matches rated ballast voltage and that lamps are type shown on ballast.
5. Mount fixtures to continuous bracket channel and make all necessary wire connections. See Figure 1. If equipped with Quick Connect electrical system, make connections and push connectors back into fixture housing through hole provided. **Do not leave any screw holes unsecured! High winds can damage fixtures!** Connect fixtures end-to-end using hardware and gasketing material supplied (see Figure 2). Level fixtures and align.
6. Install supplied self-drilling Tek screws up through fixture mounting plate into mounting channel. Also install Tek screws (supplied) through top mounting brackets into mounting channel. **Note: Wind can damage fixture if bottom screws are not installed!** See Figure 2.
7. Install fixture end cover plate with supplied hardware at termination of continuous run. **Note: Fixture end covers are not required when securing two fixtures together!**
8. Reinstall reflector(s) and lamps.

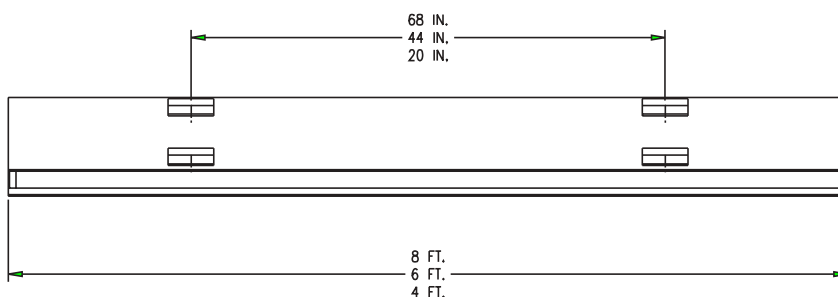
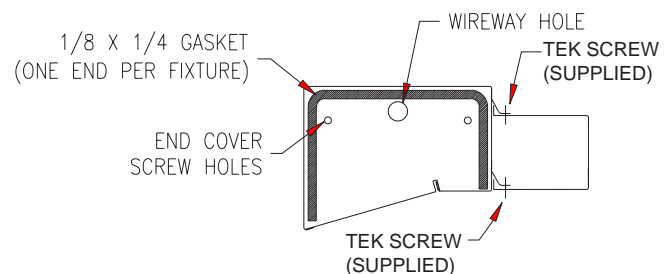


Figure 1

Figure 2



BUILDING MOUNT (FACTORY SUPPLIED CHANNEL AND L-BRACKETS)

Note: The mounting hardware for these fixtures has been engineered. However, the crucial engineering points are the attachment of the mounting hardware to the building. Care should be taken to choose a fastener type for your structure. LSI is not responsible for any such fastener engineering. If any engineering is questionable, it is advisable that a local engineer review and certify the fastening techniques in question.

1. Remove fixture and hardware from carton. Inspect for damage.
2. *If not equipped with QC (quick connect) feature*, remove lamp and reflector(s), set aside.
3. Wire individual fixtures according to local code and National Electrical Code (NEC). Lampholders are prewired to ballast. Follow wiring diagram on ballast label. **Note: If supply wires are within 3 inches of ballast, use wire rated 90 degrees C.**
4. Before energizing, make sure input voltage matches rated ballast voltage and that lamps are type shown on ballast.
5. Secure L-brackets to back of channel mount. **Do not leave any screw holes unsecured! High winds can damage fixtures!** See Figure 1.
6. Secure channel mount to building top or ledge using L-brackets.
7. Mount fixtures to continuous bracket channel and make all necessary wire connections. See Figure 1. If equipped with Quick Connect electrical system, make connections and push connectors back into fixture housing through hole provided. Connect fixtures end-to-end using hardware and gasketing material supplied (see Figure 2). Level fixtures and align.
8. Install supplied self-drilling Tek screws up through mounting channel into fixture mounting plate. Also install Tek screws (supplied) through top fixture mounting plate into mounting channel. **Note: Wind can damage fixture if bottom screws are not installed!** See Figure 2.
9. Install fixture end cover plate with supplied hardware at termination of continuous run. **Note: Fixture end covers are not required when securing two fixtures together!**
10. Reinstall reflectors and lamps.

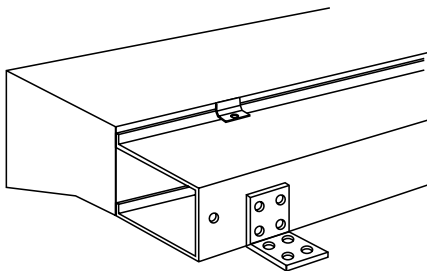


Figure 1

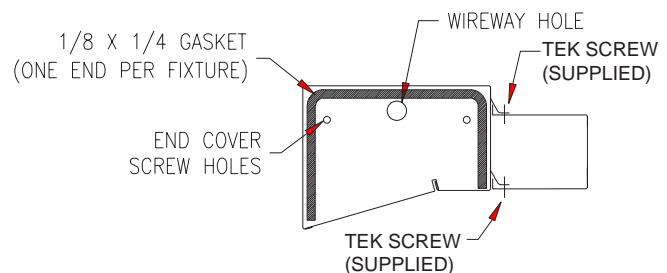


Figure 2



QUESTIONS?
Call LSI Field Service Dept.
1-800-436-7800 ext.3300 • Fax (513)793-0147

10000 Alliance Road Cincinnati, Ohio 45242 Phone (800)436-7800 Fax (800)373-9998

INSTALLATION AND ASSEMBLY INSTRUCTIONS WF WIDE FACIA SERIES FIXTURE - CANOPY MOUNT

WARNING: Wiring to be performed by qualified electrician only.

WARNING: Disconnect power before servicing.

WARNING: Risk of fire or electrical shock. Verify the existing input voltage and match to product label before wiring.



CANOPY MOUNT

Note: The mounting hardware for these fixtures has been engineered. However, the crucial engineering points are the attachment of the mounting hardware to the building. Care should be taken to choose a fastener type for your structure. LSI is not responsible for any such fastener engineering. If any engineering is questionable, it is advisable that a local engineer review and certify the fastening techniques in question.

1. Examine layout and confirm necessary parts have been received. Confirm canopy dimensions match those on the layout.
2. WF fixtures are mounted onto canopy by utilizing a C-shaped mounting bracket (“A” in table and Figure 1) and vertical supports (“F” in table and Figure 1). Mount “F” to canopy decking on 48” centers. Two “F” supports are required per each “A” bracket section, including “A” brackets field-cut shorter than as-shipped 96” lengths. Cut “F” brackets to approximate height if required.
3. “A” brackets are shipped 96” long. At least one may need to be shortened on one side of canopy. **Note: Precut miter sections are 2’ long!**

ACCESSORY ORDERING INFORMATION

Description	Order Number
A. Fixture Mounting Bracket	BKS-WFBO-WM-96-*
B. Bracket End Cap	00069*
C. Fixture End Cap	43148*
D. Left Straight Extension	43319*
Right Straight Extension	43320*
E. Adjustable Outside Corner	43366*
Adjustable Inside Corner	43367*
F. Upright Support	43287
G. Hat Bracket	52787
H. L-Bracket	52993
J. Fascia Extension Bracket	5200159
K. Right Hand 2’ Miter	5200251*
L. Left Hand 2’ Miter	5200252*

*Specifies finish color

Figure 1

4. When corners are included, miter cut the C-shaped “A” bracket so the bracket is continuous. See Figure 2.
5. Arrange fixtures as indicated on layout. Notice that some components are coupled to achieve the 10’, 12’, 14’, and 16’ lengths. Example: A 14’ fixture is made up of (1) 8’ fixture with ballast and (1) 6’ fixture without ballast. Chase bushings are provided on only one end of fixture.
6. *If not equipped with QC (quick connect) feature, remove lamp and reflector from each fixture.*
7. Mount entire fixture to continuous C-shaped bracket (“A”). Install supplied self-drilling Tek screws up through mounting

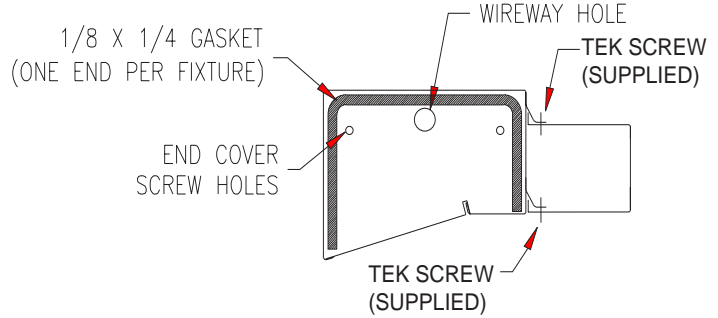
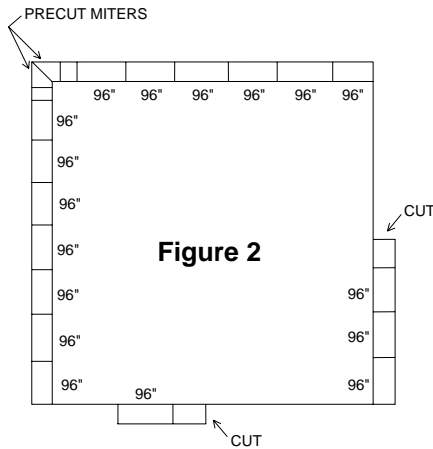


Figure 3

8. Wire fixtures per local code and National Electrical Code (NEC).
9. Before energizing, make sure input voltage matches ballast voltage.
10. If extensions are used, go to steps 12-17.
11. Install fixture and C-shaped bracket end caps ("C") as shown in Figure 1. If equipped with Quick Connect electrical system, make connection and push connector back into fixture through hole provided. Reinstall reflectors and lamps.
12. To install adjustable extensions, simply slide extension over fixture to proper position (even with end of canopy) and secure with Tek screws. See "D" in Figure 1. Trim to length.
13. Refer to layout to establish corner and closed end treatments. Adjustable outside corner extensions will be used on all outside corners. The canopy length versus the fixture length determines the closed end treatment. Your layout will show you which options are to be used. See Figure 4.

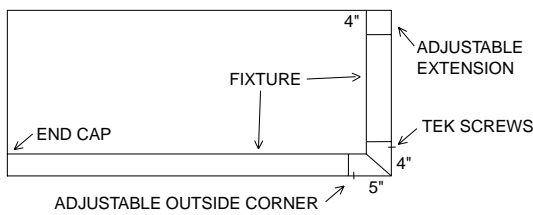
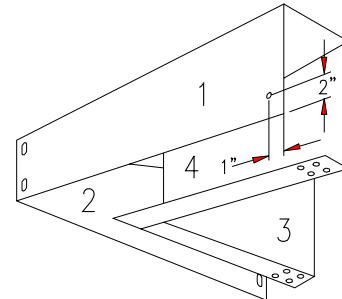


Figure 4

Figure 5



14. To install adjustable outside corner extensions, see Figure 4. Slide parts 1 and 2 over fixture with tabs part 2 inside. Trim if necessary; secure with Tek screws. Slide part 3 between part 2 and fixture and part 4 between part 1 and fixture. Secure with Tek screws and caulk all joints.
15. If outside corners are used at each end, center fixture run and proceed in step 12.
16. If an inside corner is used, allow minimum 13" from adjacent side. See Figure 6.
17. To install adjustable inside corner, see Figure 7. Slide part 5 and 6 into place before corner fixtures are secured to C-shaped bracket. Trim if necessary. After fixtures are secure and corner pieces are positioned and secured with Tek screws, position perforated part 7 with tab up, bend to fit and fasten with tek screws. Caulk all joints.

Figure 6

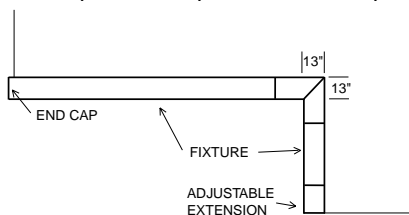
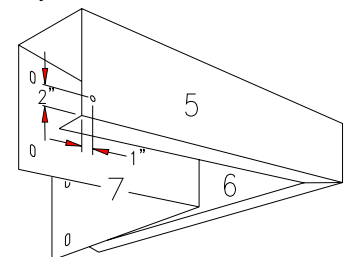


Figure 7



QUESTIONS?
Call LSI Field Service Dept.
1-800-436-7800 ext.3300 • Fax (513)793-0147