

**New**



L I G H T R O N  
**LiniArc**

*Linear Fluorescent Series*



**Architectural  
Indoor Lighting**

# LIGHTRON LINIARC SERIES

LSI's Lightron LiniArc Series is designed to deliver indirect and direct/indirect lighting with style. Available in two sizes – Large (9.75") and Small (7.90") widths – the LiniArc Series lets you choose from a wide variety of fixture designs and distribution choices to meet the aesthetic and lighting goals for your space.

## Custom capabilities with standard components mean more choices.

The LiniArc Series offers a wide range of choices that give you the ability to customize your fixture design from standard components.

- T8, T5 and T5HO lamps
- Multiple hanging options
- Tenons and corners for unique row mounting and patterns
- Custom housing openings – from slotted or perforated to unique, signature opening designs
- Custom colors

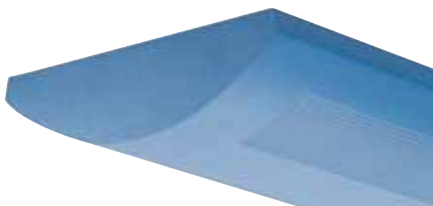
With LiniArc, your imagination is your only limitation....

### Housing Choices

You have the ability to transform your lighting into whatever best fits within the style and dimensions of your design and space.

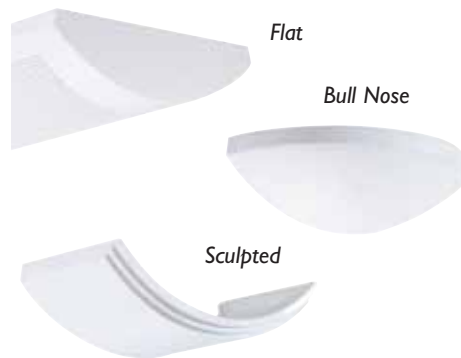
- Solid
- Full Perforation
- Small (T5 only)
- Partial Perforation
- Direct/Indirect

The LiniArc Series gives you "custom-capabilities" with standard components so you can tailor your lighting to the requirement of your space and design. With the option of custom designed openings, you can create a light fixture and space as individual as you are.



### End Cap Choices

Pick from three end cap options to further customize your lighting designs.



### Color Choices

With LSI's LiniArc Series, you have the opportunity to express yourself with color. You can select from any RAL\* color to customize your fixture, tying the lighting into your overall space design.

\*RAL is a recognized color standard representing nearly 2000 colors



# The lighting you need. The style you want.

Our wide selection of housing, shielding and end cap styles, combined with lamp and distribution options, offers you the freedom to choose fixtures that match your architectural vision without sacrificing lighting performance. Heavy gauge, steel construction – in 4, 8 and 12-foot lengths – gives you straight, smooth, uniform rows of suspended lighting at a cost comparable to recessed parabolics. Provide high quality lighting for conference rooms, office space, classrooms and libraries – anywhere suspended linear lighting is the proper choice – without busting your project's lighting budget.

## Distribution Choices

All fixtures are available with either a specular aluminum or white reflector. LiniArc Direct/Indirect's variable optics offer a choice of light distribution:

- 60% uplight / 40% downlight
- 33% uplight / 66% downlight
- 20% uplight / 80% downlight
- 100% downlight

Reflector design is optimized to deliver smooth, uniform space illumination.

## Lamp Choices

The optical system accommodates T8, T5 and T5HO lamps. Choice of 1 to 4 lamps gives you broad power to achieve the lighting levels you require.

## Shielding Choices

The LiniArc Direct/Indirect housing offers three shielding options:

- Parabolic Louver
- Solid Flat Blade Louver
- Perforated Flat Blade Louver

## Hanging Choices

LSI's LiniArc Series provides you with the design flexibility you want for both row mounting and patterns.



Stem



Wall Mount

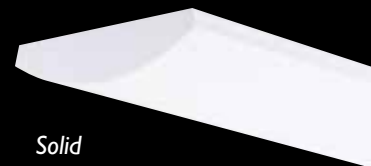


Dual Point  
Aircraft Cable



Single Point  
Aircraft Cable

## Choices of Housing and Shielding



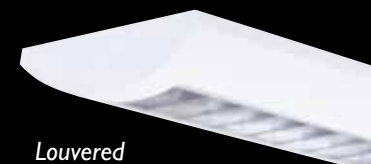
Solid



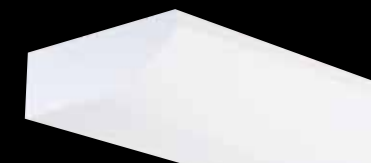
Partial Perforation



Full Perforation



Louvered



Wall Solid (indirect only)



Wall Perforation



**Exceptional fit and finish offer a quality aesthetic impression.**

With its exceptional fit and finish construction, the LSI LiniArc Series offers an outstanding aesthetic impression.



## Go beyond the product with the LiniArc Advantage!

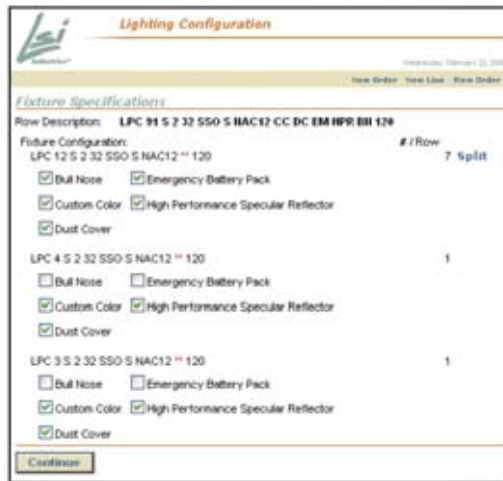
In addition to offering you outstanding product, the LiniArc is sure to be a favorite for your contractor! LiniArc fixtures come in 4, 8, and 12-foot sections, which can be easily joined end-to-end on site for both row and pattern designs.

- Standard lengths (4, 8 and 12-foot) for on-grid mounting
- Fixtures interchangeable within a row – **no starter or end**
- Simplified suspension length adjustment
- Dual Point mounting option for precision alignment
- Flexible aligner/light seal
- Quick connects

- Thru-wire harnesses
- Products and packaging clearly labeled
- Individual cartons or job pack
- Clearly identified hardware – **can be pre-shipped**
- Pallets same length as fixture to avoid breakage
- Special pallet requirements can be accommodated
- 10-day shipment on standard product

With LSI's LiniArc Series, you can be confident that your linear lighting system will be well-received by all.

**Simple, convenient ordering makes lighting your space quick and easy.**



LSI's web-based configurator lets you figure out your space, lighting and fixture requirements, and then identifies fixture components needed to meet them, making ordering a snap.



LSI ARCHITECTURAL INDOOR LIGHTING  
 10000 Alliance Road  
 Cincinnati, Ohio 45242  
 (513)793-3200 FAX (513)793-0147  
 www.lsi-industries.com

**For your next lighting project, consider LSI's entire family of linear fluorescent solutions.**



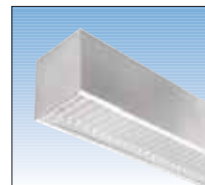
### Linear 9x3

Extruded aluminum direct/indirect with semi-specular aluminum parabolic louver.



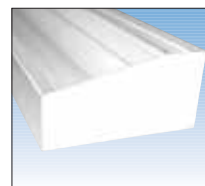
### Paralinear

Slim, high-efficiency direct fixture with semi-specular aluminum parabolic louver. Available in one and two T8, T5 or T5HO lamps.



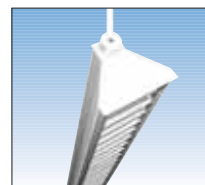
### Linear 6x6

Traditional 6" square beam available in direct or direct/indirect distributions.



### Cove

Concealed cove light, available in 2, 3, 4 and 8-foot lengths and 1 or 2 T5, T5HO and T8 lamps.



### Linear for Retail

Adjustable, louvered direct T5 fixture, aimable 0-45° horizontally and vertically.