

INSTALLATION AND ASSEMBLY INSTRUCTIONS

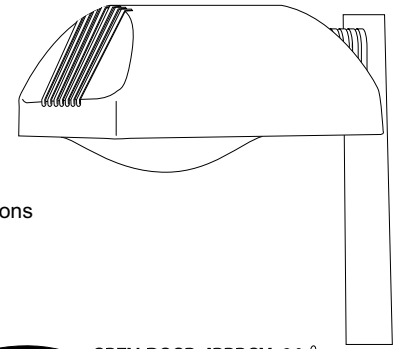
CHV / CHH CHALLENGER® SERIES LUMINAIRE

Various reflector models are protected by U.S. Patents 6,152,579 and 6,464,378 and other patents pending

WARNING: Before proceeding, read all instructions carefully to insure proper and safe installation.

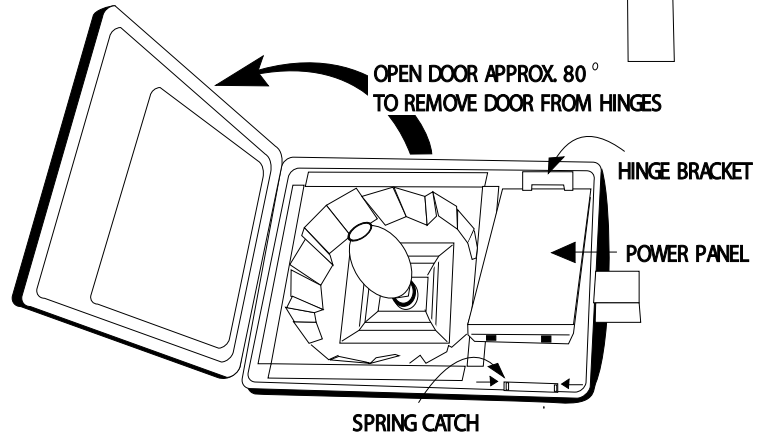


Listed for wet locations



LUMINAIRE PREPARATION

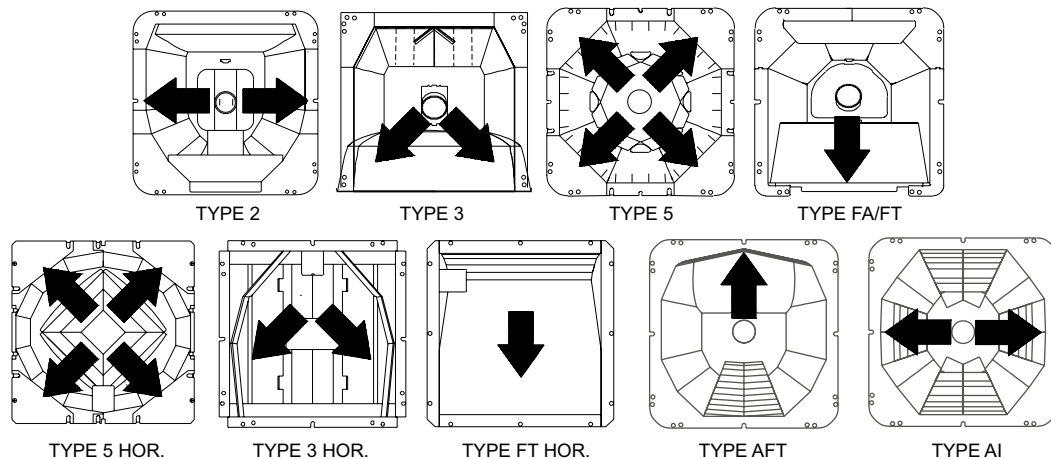
1. Remove outer carton and top insert. Leave luminaire in cradle for ease of preparation.
2. Loosen both door screws. (Note: screws are captive in door housing). If equipped with ground relamp option, simply lift door open and remove cardboard insert.
3. For ease of installation, door removal is recommended. Lift door up approximately 80 degrees and unhook from hinges. Note: Ground relamp luminaire requires leaving door on.
4. Remove power panel by squeezing spring catch, hinging upward and unhooking from hinge bracket. Before removing power panel from luminaire be sure to unplug the electrical quick disconnect(s).



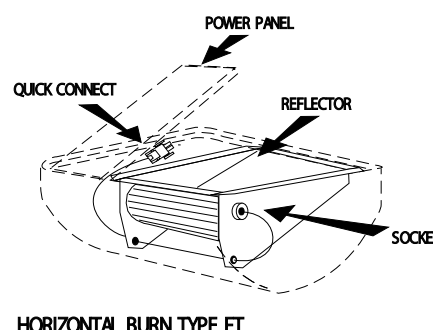
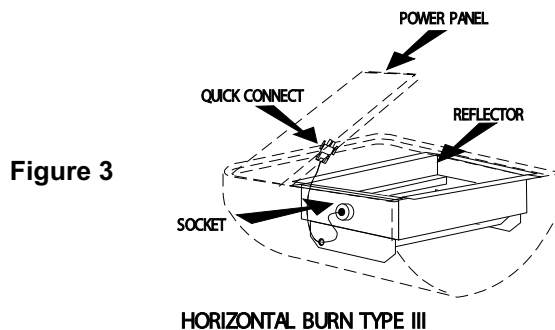
REFLECTOR PREPARATION

1. All reflectors are field rotatable. Type 5 horizontal and vertical are symmetrical - there is no need to rotate these reflectors. To rotate Type III and FT horizontal reflectors remove (4) perimeter screws, position reflector in housing for desired light distribution and replace screws. Refer to note below and Figures 3 and 4 regarding special wiring instructions for these two reflectors. To rotate Type II, III, FA, FP, AFT and AI vertical reflectors remove (4) perimeter screws and either (1) or (2) screws attaching socket assembly to roof of housing. **DO NOT REMOVE SOCKET ASSEMBLY FROM REFLECTOR.** Rotate reflector in housing for desired light distribution and replace ALL screws.

Figure 2
(Arrows indicate light distribution)



Note: When rotating horizontal burn reflectors, lead wires must be routed through hole(s) on reflector side panels. Failure to do so may result in cut, pinched, or burned socket wires. See Figures 3 and 4.



2. Locate lamp. Check to make sure lamp type and wattage match luminaire label.
3. Install lamp. To ensure best contact in socket, tighten, then loosen, then re-tighten lamp. Wipe lamp and reflector with a soft clean cloth. Warning: If lamp is soiled, operating hours and lamp performance will significantly decrease.