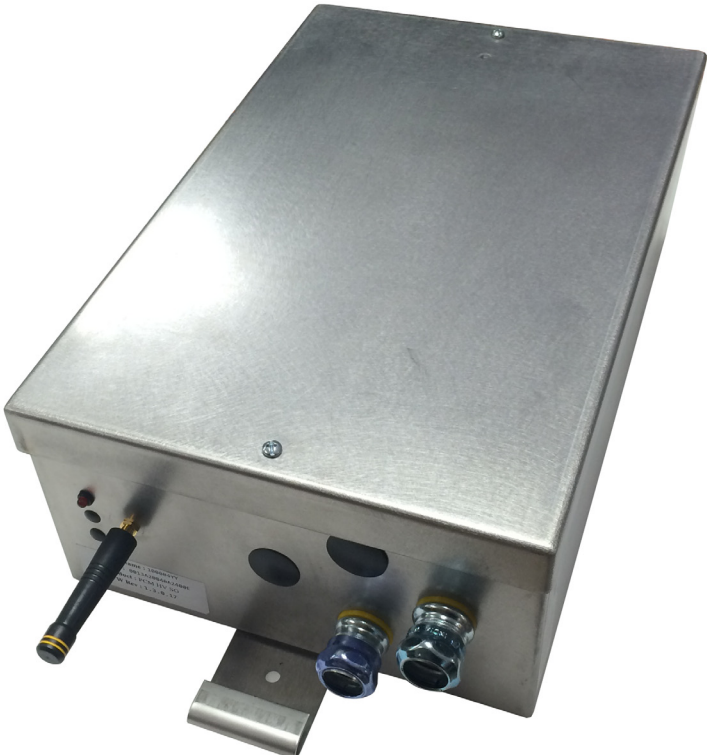
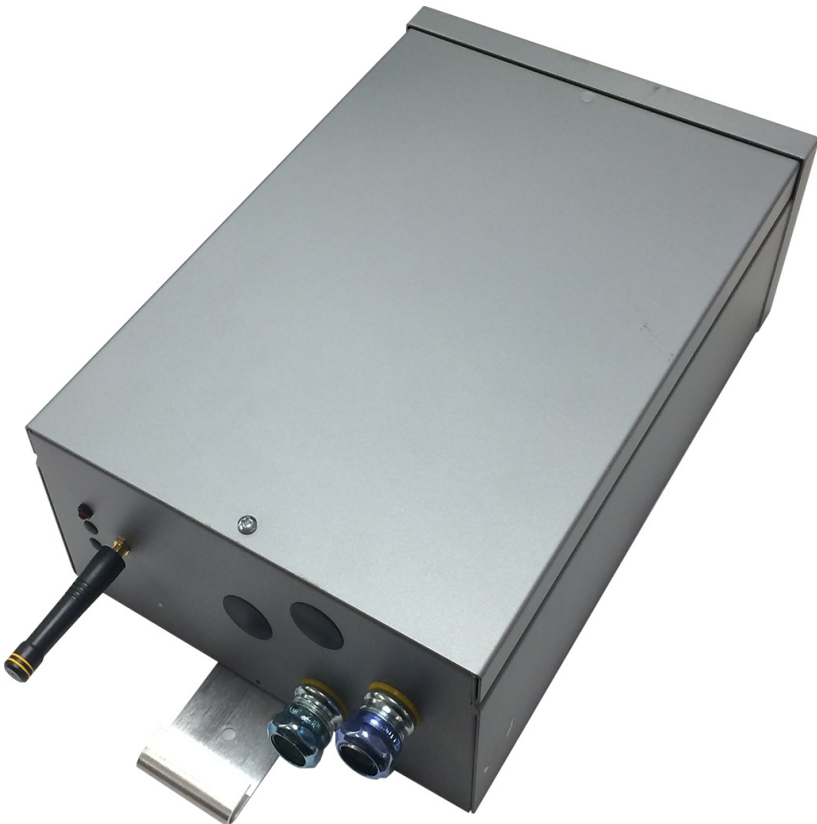


# Gold Zone Controller (GZC UE/HV EXT/SS)



## Installation Guide



# 1.1 Mounting

- Step 1. Turn power off at the service panel.
- Step 2. Use appropriate hardware to mount the Zone Controller to the intended structure (wall or pole).
- Step 3. Thread antenna on the enclosure and make sure that the unit is vertically aligned with the antenna pointed towards the ground.
- Step 4. Secure the enclosure to prevent any damage.

# 1.2 Line Voltage Wiring

- Step 1. Remove panel cover and set aside.
- Step 2. Connect the device to the circuit as shown in the wiring diagram below.

### TERMINAL BLOCK TORQUE SPECIFICATION

0.6N-m < t < 0.8N-m,  
5.3in-lb < t < 7.1in-lb

### Power Wiring Connections

UE (120-277VAC)

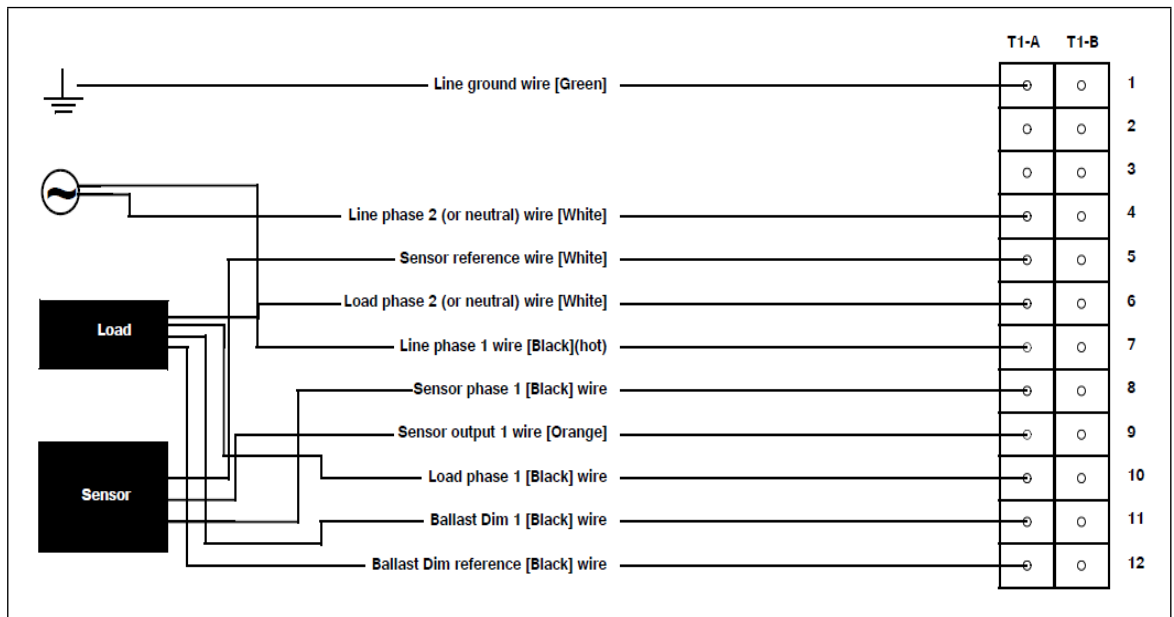


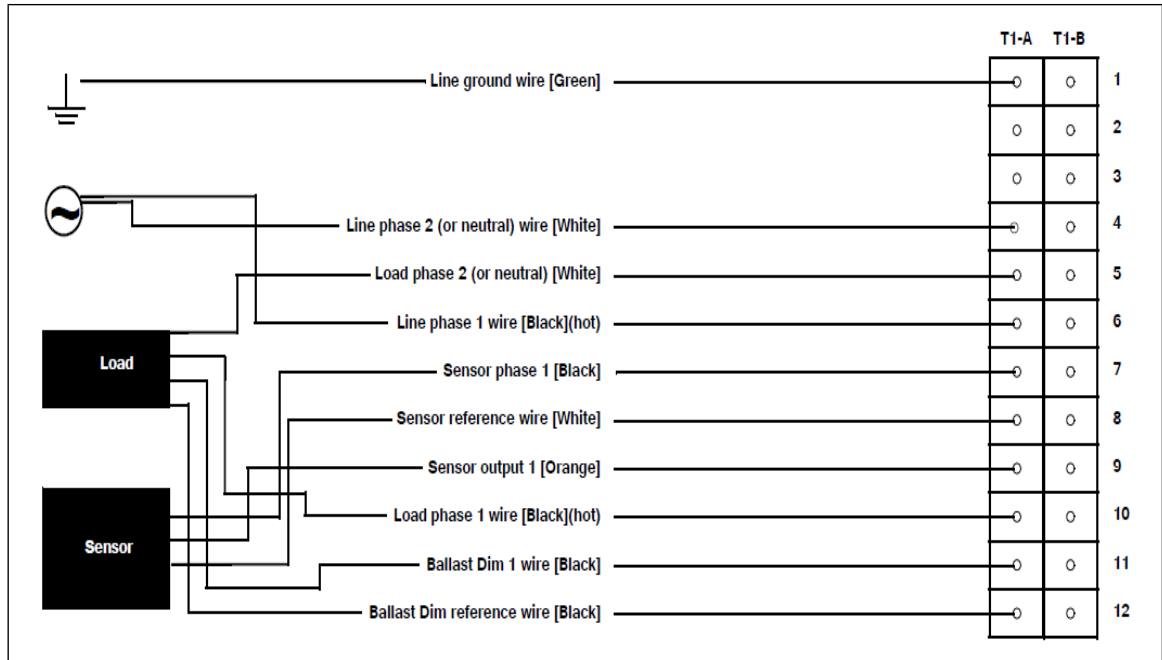
Figure 1: GZC UE Wiring Diagram

**Note: Sensor power is supplied by installer. Sensor reference shown is for signal reference only.**

1. Line ground wire to the T1-A-1 (GRND)
2. Load ground wire to the T1-A-2 (Ground Load 1)
3. Line phase 2 (hot or neutral) wire to T1-A-4 (Neutral)
4. Load phase 2 (hot or neutral) wire to T1-A-6 (Neutral Load 1)
5. Line phase 1 wire (hot) to T1-A-7 (Hot 120-277 1PH)
6. Load phase 1 wire (hot) to T1-A-10 (Load 1 B/Y)
7. Sensor phase 1 wire (hot) to T1-A-8 (Line phase 1) (optional)
8. Sensor output 1 wire to a Control Signal T1-A-9 (Neutral Motion) (optional)
9. Sensor reference wire to the 2<sup>nd</sup> Control Signal orange wire T1-A-5 (Motion) (optional)
10. Ballast Dim 1 wire to the Dim 1 T1-A-11 (Dim Line 1+)
11. Ballast Dim reference wire to the Dim 1 reference T1-A-12 (Dim Line 1 Ref)

**Power Wiring Connections**

HV (347-480VAC)



**Figure 2: GZC HV Wiring Diagram**

1. Line ground wire to the T1-A-1 (GRND)
2. Load ground wire to the T1-A-2 (Ground Load 1)
3. Line phase 2 (hot or neutral) wire to T1-A-4 (Neutral)
4. Load phase 2 (hot or neutral) wire to T1-A-5 (Neutral Load 1)
5. Line phase 1 wire (hot) to T1-A-6 (Hot 120-480 1PH)
6. Load phase 1 wire (hot) to T1-A-10 (Load 1 B/Y)
7. Sensor output wire to T1-A-9 (Motion) (optional)
8. Sensor reference wire to the 2<sup>nd</sup> Control Signal orange wire T1-A-11 (Motion) (optional)
9. Ballast Dim 1 wire to the Dim 1 T1-A-11 (Dim Line 1+)
10. Ballast Dim reference wire to the Dim 1 reference T1-A-12 (Dim Line 1 Ref)

Step 3. Reinstall panel cover with provided screws.

Step 4. Restore power at service panel.

Step 5. Perform system setup and/or programming activities as applicable in accordance with the instructions of the system programming device (Gold Site Manager).

Result of this task: RED LED on the enclosure indicates the target load is activated and the light dim level set to 60% or higher.

Copyright © 2015 by LSI Controls

All rights reserved.

For permission requests, please contact at:

15268 NW Greenbrier Parkway

Beaverton, OR 97006

1-844-444-4476

[www.lsi-industries.com](http://www.lsi-industries.com)

