

INSTALLATION AND ASSEMBLY INSTRUCTIONS

CHALLENGER® CHV SERIES AFT / AI / A5 REFLECTOR KIT

WARNING: Disconnect power before servicing.

WARNING: Verify the existing input voltage. Make sure it matches the pre-wired voltage of the power panel.

- On multi-tap ballasts, be sure to wire to correct supply lead voltage! Cap off unused wires individually.

WARNING: Wiring to be performed by qualified electrician.

IMPORTANT: Multi-tap ballasts are pre-wired to 277V.

IMPORTANT: Socket assemblies and cutoff shields are packed in *bottom of outer reflector carton*.

- It is important to identify which reflector kit you are installing. Read label on outside of carton to confirm kit type. AI and A5 kits include a new reflector and new socket assembly. AFT kits include a new reflector, new socket assembly, and new backlight cutoff shield.
- Loosen both door screws (do not remove - screws are captive). If equipped with GR (ground relamp) option, pry door open. Allow door to swing down (do not remove door).

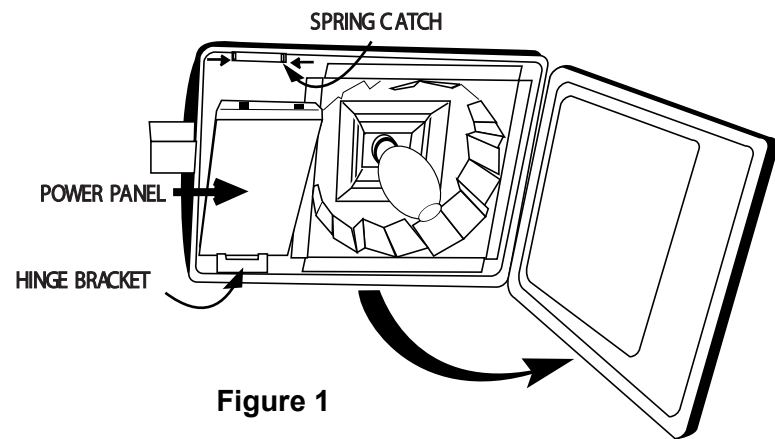


Figure 1

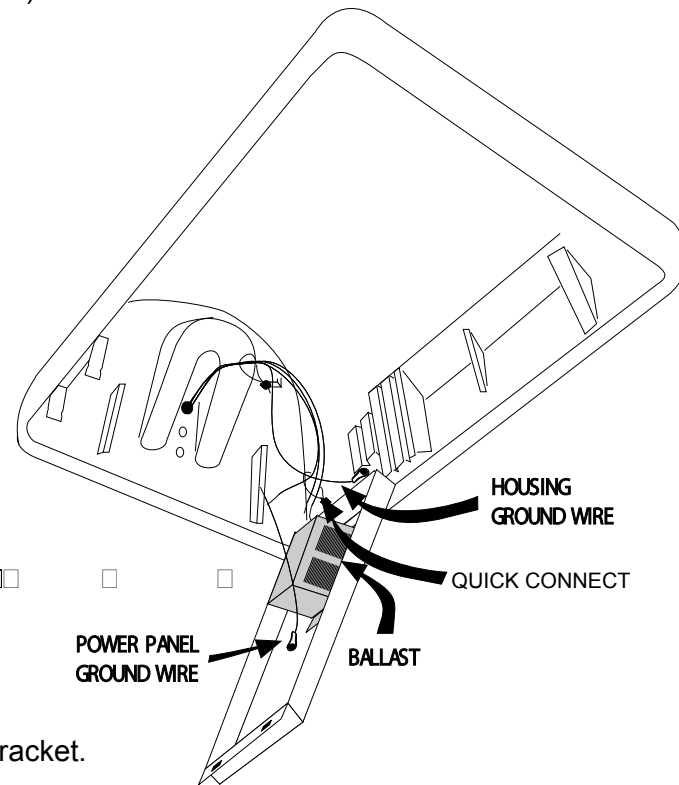
- Compress power panel spring catch and allow power panel to swing down. See Figures 1 and 2.

- Unplug quick connect from power panel to reflector.

NOTE: If replacing reflector only, proceed to step 9.

If replacing ballast and reflector, proceed to step 5.

- Disconnect incoming power leads from ballast and ground.
- Remove power panel from luminaire housing. Discard components per local code.
- Install new power panel by hanging slotted end over hinge bracket. See Figure 1.
- Wire to local code and National Electrical Code. Use all ground leads. See Figure 2.
- Remove flange screws and socket bracket screws securing reflector. Set screws aside to reuse.
- Remove lamp from reflector. Discard lamp and reflector per local code.
- On type FA reflectors only, also remove small reflector mounting plate in topside of housing. Keep these screws to reuse, but discard mounting plate.



A Company with a Smart Vision

INSTALLATION AND ASSEMBLY INSTRUCTIONS, cont'd.

- Locate socket assembly packed in *bottom of outer reflector carton*. Attach socket assembly to top of new reflector by engaging tabs on one end of socket assembly into mating slots of reflector top. Then push/pull opposite side of socket assembly to engage opposite side of reflector top. Depending on which type of reflector kit you have, see Figures 3A-3C.

NOTE: Reflectors are directional. Use arrow on label to direct light in correct direction.

- Secure new reflector/socket assembly to housing using old screws thru socket assembly holes only! See Figures 3A-3C, depending on which model. Install new lamp in new reflector. Tighten lamp, then loosen slightly, then retighten for secureness and long life.
- Finish securing reflector to housing by using old screws to secure new reflector flange. On type AFT reflectors only, locate additional cutoff shield in bottom of outside reflector carton and install as shown in Figure 3A.
- Wipe lamp and reflector with dry, clean cloth.
- Connect quick connect from reflector to power panel.
- Swing power panel into position and secure using spring latch.
- Locate new power panel labels shipped with reflectors. Place label on bottom surface of power panel. This ensures ballast will be serviced correctly in the future. Replace label **ONLY** if changing ballast wattage from 1000 to 750.
- Swing door back into position. Secure by evenly tightening both door screws. Or, if equipped with ground

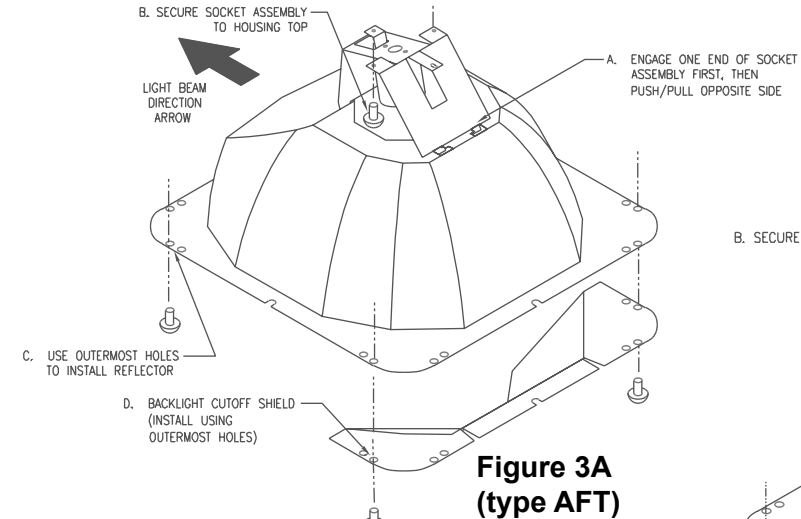


Figure 3A (type AFT)

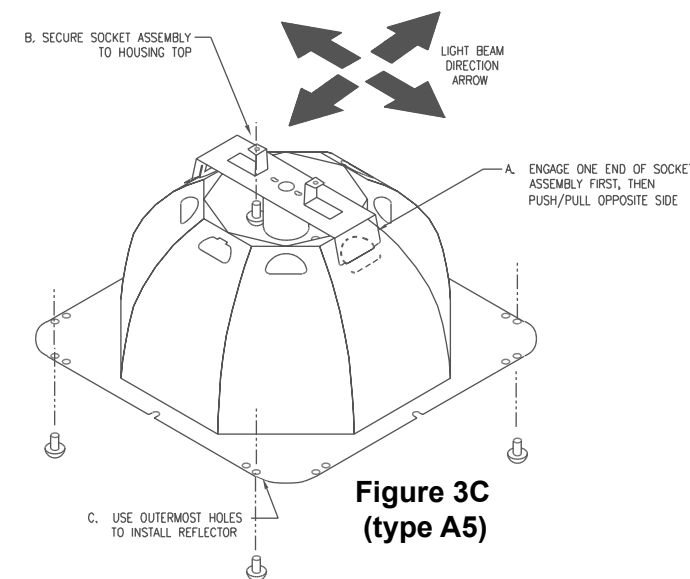


Figure 3C (type A5)

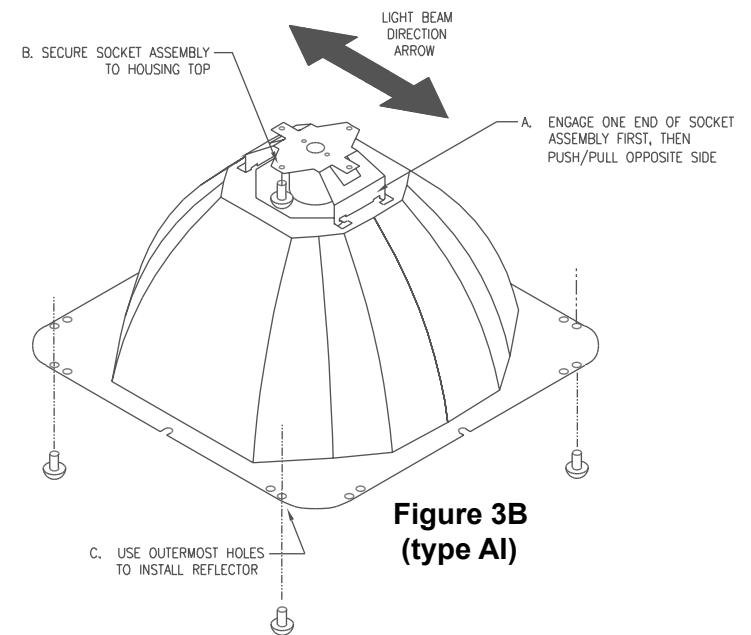


Figure 3B (type AI)

Questions?
 Call LSI Field Service
 1-800-436-7800 Ext. 3300 Fax 1-877-861-1368