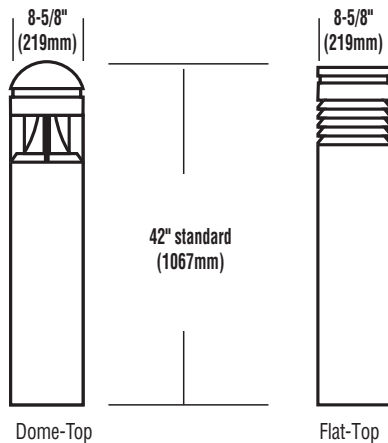


LED BOLLARD LIGHT (XBVRD)

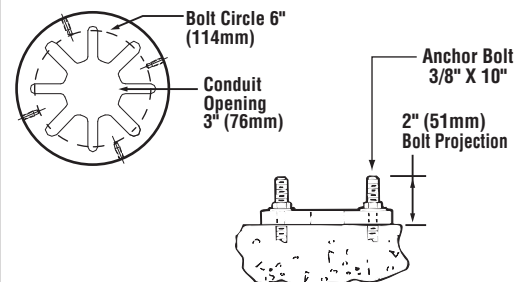


DIMENSIONS



BASE DETAIL

Note: Base plate dimensions may change without notice. Do not use for setting anchor bolts. Consult factory for base plate templates.



U.S. and international patents pending

EXPECTED LIFE - Minimum 60,000 hours to 100,000 hours depending upon the ambient temperature of the installation location. See LSI web site for specific guidance.

LEDS - Select high-brightness LEDs (5200K^o).

REFLECTOR/DISTRIBUTION - Indirect and external louver. Photometric data is tested in accordance to IESNA Procedures.

HOUSING - Crown: Virtually tamper-proof concealed stainless steel fasteners in the cast aluminum crown assembly.

Lower Housing: One-piece, .322 inch seamless, extruded aluminum. Various heights are available in 6" increments starting at a minimum of 30" (maximum height is 60"). Lower housing attaches to cast aluminum base plate with four stainless steel roll pins.

LENS/GASKET - One-piece, clear acrylic lens enclosure fully gasketed at top and bottom edge.

ANCHOR BOLTS - Requires four heavy-duty 3/8" x 10" galvanized steel anchor bolts.

ELECTRICAL - Universal voltage power supply (120-277 VAC, 50/60 Hz). Surge protector meets IEEE C62.41.2-2002, Scenario 1 Location Category C.

DRIVER - State-of-the-art driver technology designed specifically LSI LED light sources provides unsurpassed system efficiency. Driver complies with IEC and FCC standards.

OPERATING TEMPERATURE - -40°C to +50°C (-40°F to +122°F).

FINISH - Each fixture is finished with LSI's DuraGrip[®] polyester powder coat finishing process. The DuraGrip finish withstands extreme weather changes without cracking or peeling, and is guaranteed for five full years. Standard colors include bronze, black, platinum plus, buff, white, graphite, satin verde green and metallic silver.

DECAL STRIPING - Color-coordinated decal is available in 9 standard decal colors or by custom order from a selection of hundreds. Decal is guaranteed for five years against peeling, cracking, or fading.

WARRANTY - LSI LED fixtures carry a limited 5-year warranty.

PHOTOMETRICS - Application layouts are available upon request. Contact LSI Applications Group at lighting.apps@lsi-industries.com.

LISTING - Listed to U.S. and Canadian safety standards. Suitable for wet locations.

Also available in traditional light sources

This product, or selected versions of this product, meet the standards listed below. Please consult factory for your specific requirements.



| SHIPPING WEIGHTS - LED Bollard | | | | |
|--------------------------------|-----------------------|-----------------|----------------|-----------------|
| Catalog Number | Est. Weight (kg/lbs.) | Length (mm/in.) | Width (mm/in.) | Height (mm/in.) |
| XBVRF | 25/56 | 1318/51.875 | 311/12.25 | 251/9.875 |
| XBVRD | 25/56 | 1318/51.875 | 311/12.25 | 251/9.875 |
| Anchor Bolts (3/8" x 10") | 1/set 1/2 | - | - | - |

| LIGHT OUTPUT | |
|-------------------------|------------------|
| Fixture | Lumens (nominal) |
| XBVRD | 600 |
| Input Power of 15 watts | |

LED BOLLARD LIGHT (XBVRD)



PRODUCT ORDERING INFORMATION

TYPICAL ORDER EXAMPLE: **XBVRD LED ID 12 CA UE BRZ**

| Prefix | Distribution | Light Source | # of LEDs | Lens | Line Voltage | Finish | Options |
|---------------------------------------|--|---------------------------|-----------|--------------------|---|---|---|
| XBVRF - Flat-Top XBVRD - Round-Top | ID - Indirect EL - External Louver | LED (5200K ⁰) | 12 | CA - Clear Acrylic | UE - Universal Electronic (120-277V 50/60Hz) | BRZ - Bronze BLK - Black PLP - Platinum Plus BUF - Buff WHT - White GPT - Graphite SVG - Satin Verde Green MSV - Metallic Silver | H - XX (Specify Height) ¹ PCI120 - Button-type Photocell PCI208, 240,277 - Button-type Photocell GFR - GFI Duplex Receptacle LAB - Less Anchor Bolts |

| Color Decals |
|-----------------------------|
| 45 - Light Gold |
| 20 - Charcoal Metallic |
| 55 - Black |
| 94 - Blue Black |
| 59 - Dark Green |
| 51 - Dark Red |
| 21 - Tomato Red |
| 50 - White |
| 700 - Aztec Silver Metallic |

1 - Taller or shorter heights available in 6" increments. Minimum height is 30". Maximum height is 60".

| ACCESSORY ORDERING INFORMATION (Accessories are field installed) | |
|--|--------------|
| Description | Order Number |
| ABKIT - Anchor Bolt Kit (BVR) 3/8" x 10" - Galvanized | 285560 |
| HSS - Round House Side Shield | 122510 |